



## Brass Grid Strainer PRO17GPU

### FEATURES:

- Solid brass waterways
- Compatible any lavatory faucet
- Lifetime warranty
- 17 gage tail piece
- 100% ISO9001 certified factory tested before shipment



### APPLICABLE STANDARDS/CODES:

*Specified model meets or exceeds the following:*

- ANSI/ASME A112.18.1
- CSA B125
- IAPMO/UPC

### AVAILABLE FINISHES:

- CP = Polished Chrome

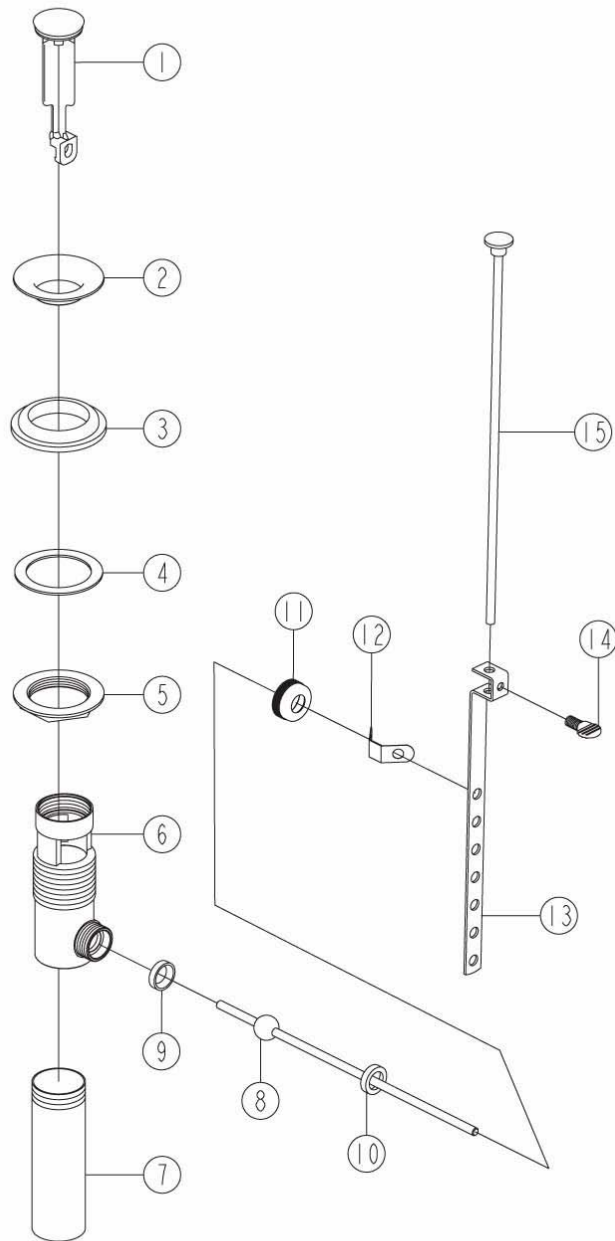
### SPECIFIED MODEL:

Model	Description	Finish
PRO17GPU	Brass grid strainer.	CP



# PRO17GPU

## EXPLODED DRAWING





## PRO17GPU

### PARTS LISTING

No.	Name	Parts No.	Finish	Material	Q'ty
1	Plunger	522001	CP		1
2	Flange	224006	CP	C28000	1
3	Seal	010059		SBR	1
4	Washer	013038		PE	1
5	Nut	009062	CP	GBR-002	1
6	Pop-up body	123004	CP	GBR-002	1
7	Brass pipe	051112	CP	C27000	1
8	Knob	026005	CP		1
9	Platic ring	200109		PVC	1
10	Platic ring	200009		PA66	1
11	Nut	009063		C36000	1
12	Fitting washer	120030		SUS304	1
13	Strap	027000	CP	Q235-A	1
14	Screw	008070	CP	Q235-C	1